



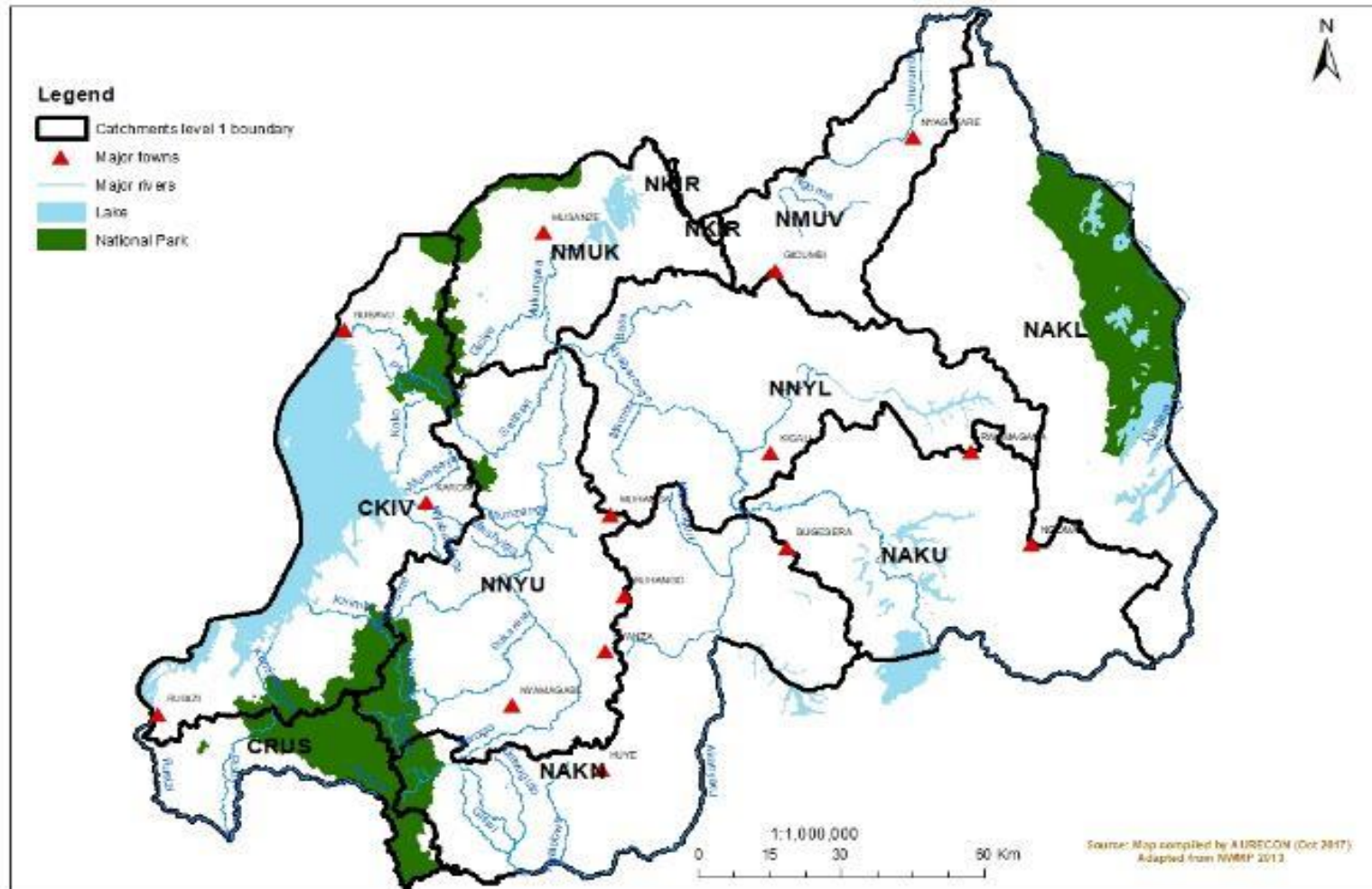
# Catchments and spatial planning

Vital Munyandinda

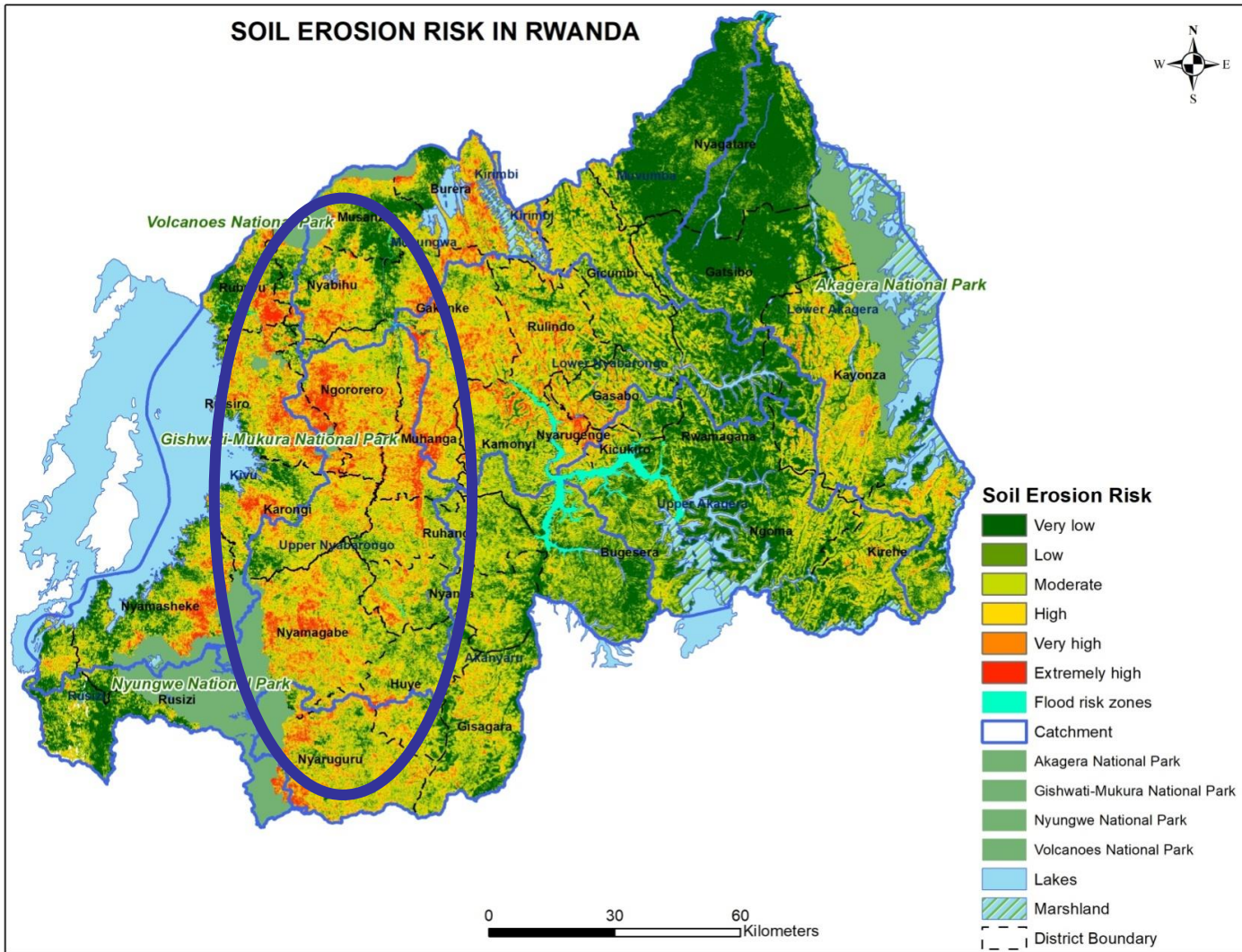


# What is a Catchment??

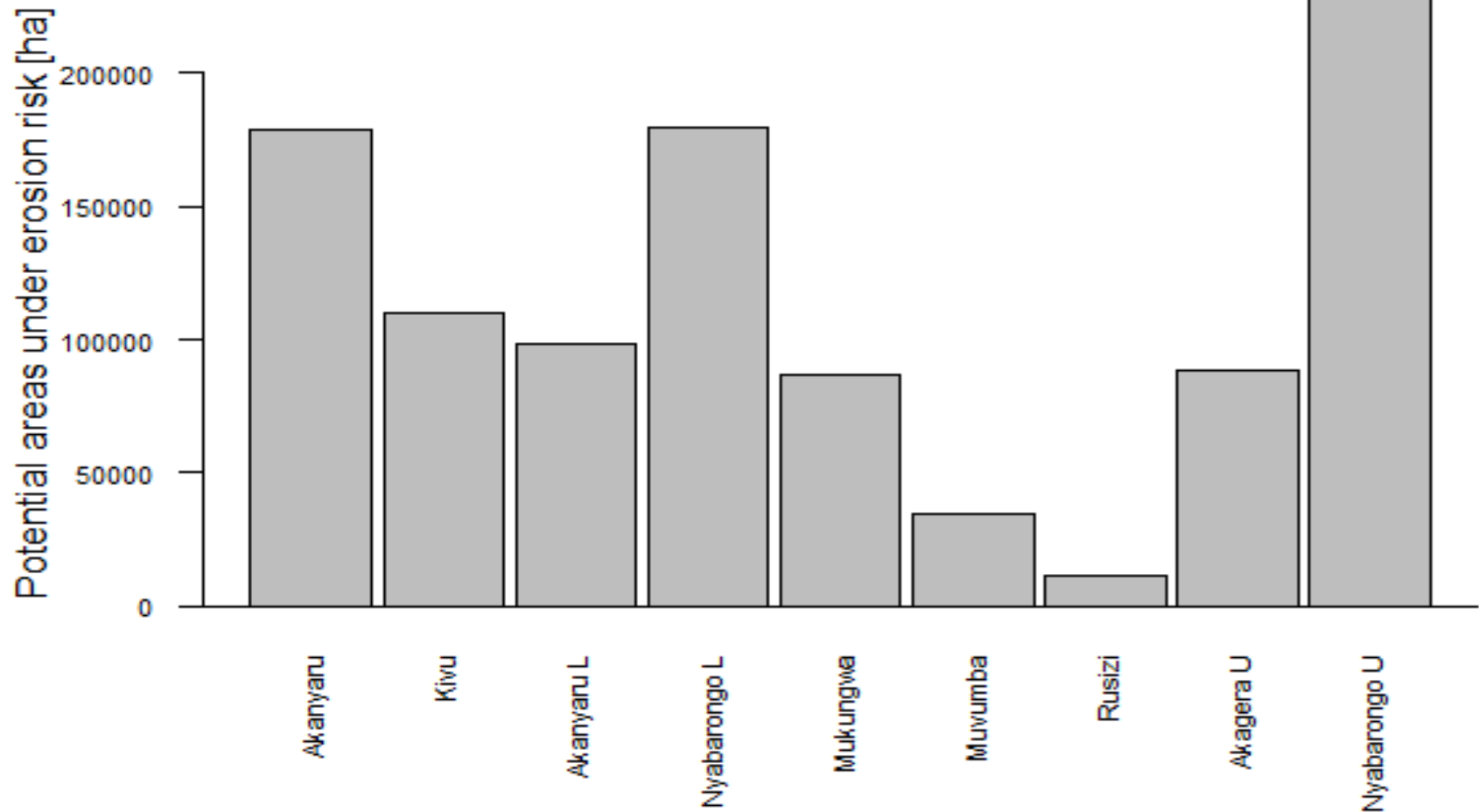
- A catchment is a topographically delineated area drained by a stream system; i.e., the total land area above some point on a stream or river that drains past that point.



# General key issue: SOIL EROSION



# Potential areas of soil erosion per catchment



# What has been done so far...

- Development of Catchment Management Plan for the 4 demonstration catchments (Upper Nyabarongo, Sebeya, Nyabugogo and Muvumba).
- Rehabilitation of priority degraded areas:

Catchment	Area (ha)	Implementing Project	Status
Upper Nyabarongo	1100	Water for Growth	Completed
	3740	FONERWA	Completed
	135	PAGREF	Completed
Sebeya	970	Water for Growth	Completed
Mukungwa	1473.5	Adaptation Fund	Completed
Lower Nyabarongo	1310	LVEMP II	Completed
	425	RSSP	Completed
Upper Akagera	497	LVEMP II	Completed
	292	LWH	Completed
Muhazi-Nyabugogo	2000		To be initiated soon

# Mayor Challenges

- Lack of exact baseline on existing interventions due to the fact that previous implementers didn't map or didn't provide shapefiles of interventions areas.
- The topography of most part of the Country is relatively steep which accelerates soil erosion.



# Way Forward

- Production of accurate final soil erosion map
- Upload it on geoportal website so it will be accessible online for stakeholders easy access
- Develop remaining 5 Catchment Management Plans within the coming 2 years
- This will leave us well equipped with an important tool that will guide us on best practices for integrated management of our landscape and water resources countrywide.

